

Presentation On – Advantages Of Using Vehicle Monitoring System.

This Presentation has been exclusively made to create awareness on VTS which benefits Sectors like Public Transportation, Goods Carriers and Agencies interested in monitoring the movements of Vehicles.

**Presented By:
MCS GEOTECH (P) LTD**

This PPT is Divided In Four Parts

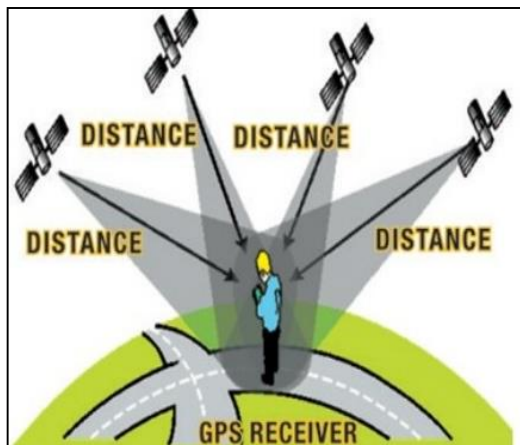
What is Vehicle Tracking System

How it works

What are the Advantages and Benefits

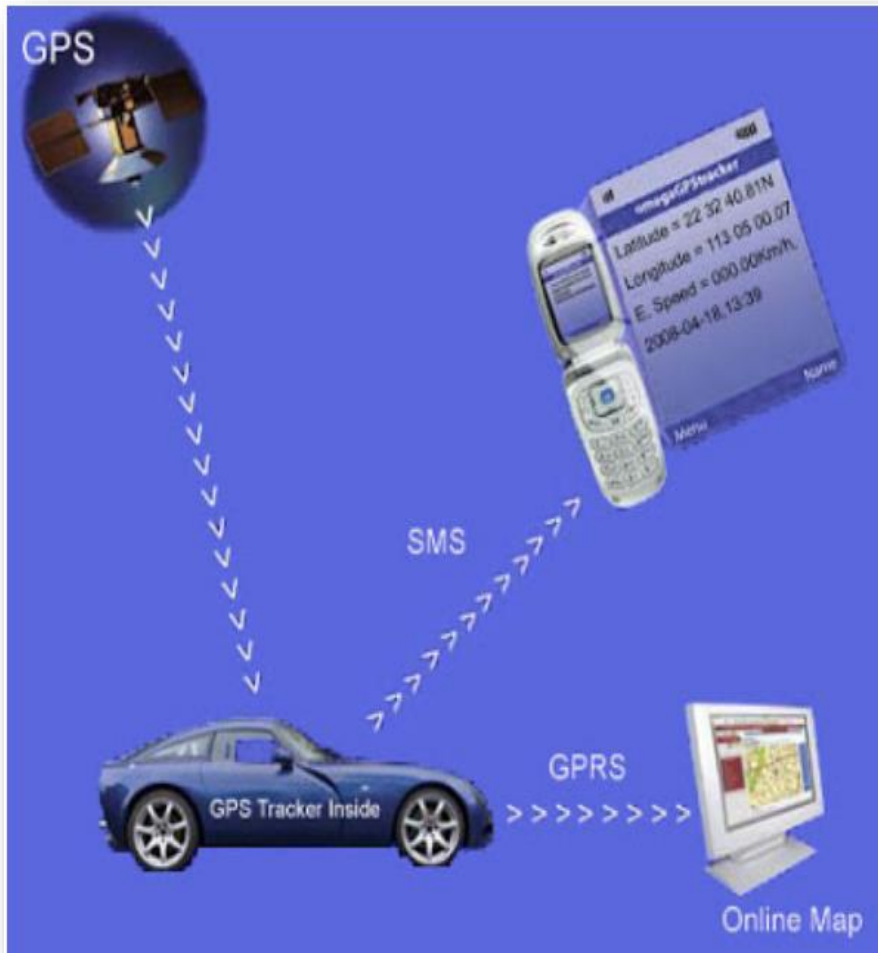
The VTS solution of MCS GEOTECH

1. Vehicle Tracking System (VTS) is a solution which provides details like vehicle's location, direction, speed and other important information in a Computer using GPS Technology.



2. How it Works?

1:- A GPS device is capable of generating Data like correct location coordinates, calculation of speed and direction with the help of satellite signals.



2:-Data from GPS device installed in Vehicle is forwarded to a Server with the help of Mobile Network.

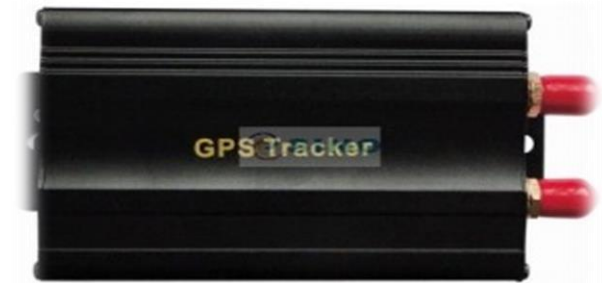
3:-The Server converts the complicated data into simplified Maps.

4:- These Maps keeps on updating and serves the purpose of realtime tracking of vehicles.

How It Works Technically:-

The GPS device fitted in vehicle sends location information, speed and other information at regular intervals to server.

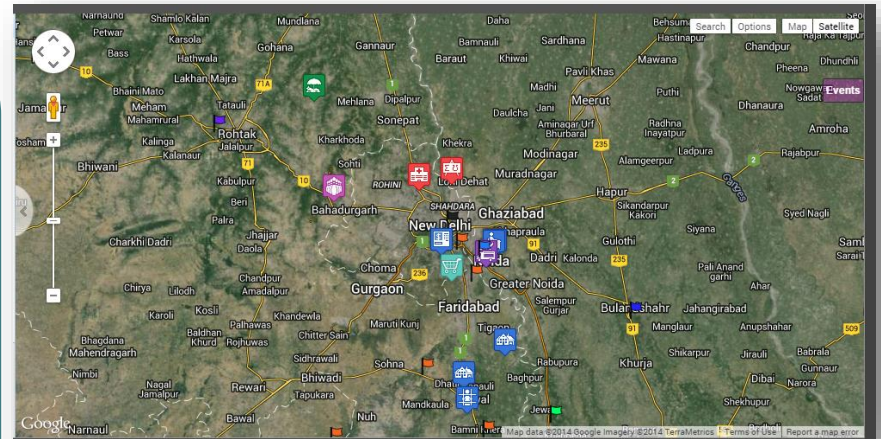
(The other information can include fuel quantity that is left, engine temperature, altitude, door open/close, tire pressure, Engine Off status,, battery status and other important details based on the compatibility of engine.)



GPS tracking server receives data from the **GPS tracking device**, processes it in simplified form, and serves this information on demand to the user.



User interface: It enables us to access information, view vehicle data, & retrieve important details from it.



3. Advantages....

Monitor Real-time vehicle movements / exact location of the cargo.

Do Asset tracking and delivering

Prevent smuggling

Reduce Over speeding and rash driving

Escalate Accident alerts.

Track break down location of the vehicle

Generate detailed route reports

If we effectively use the information provided the system, we will be able to :-

Capture and Control vehicle movements.

Deploy a responsible environment.

Minimize the cost and effort.

Finish road assignments in minimum time.

Improve the productivity by Path planning.

Lower down the operating costs of the business.

→ Now for all this We NEED A SOLUTION

4. What MCS GEOTECH has designed is a complete end-to-end converged solution.....



About MCS GEOTECH (P) LTD

MCS GEOTECH is a ISO 9001: 2008 Company with ISO QMS certificate in GIS Software's, Remote Sensing solutions, Application Development & Management Consulting.

We have associations with leading GIS solution providers like ESRI & Bentley and our geospatial Maps are used in verity of applications including VTS.

We have a FindnSecure VTS application which has been designed to provide simplified Map view using the key resources of GPS Device, GPRS / GSM & GIS part of total converged solution.

The application delivers real time tracking and monitoring of vehicles.

What we will deliver:-

OBD Tracker VT-44

VT-44 is a certified dual-band integrated device, purpose-built for the Usage Based Insurance (UBI), telematics, and fleet management markets. Providing easy plug-and-play installation, the VT-44 is



Trial, Testing,
International Order,
Shipment, Order,
Distribution, Order,
Deployment

Technical Standards & Specification of GPS device

1. Physical Characteristics

Size : L(72.5mm)xW(73mm)xH(27.3mm)

Weight : .270/.326 Kg

Case Material : Hermetic enclose Ip67

Cable Length : 90 cm or 30 cm

2. Electrical Characteristic

Input Voltage : 10V to 30V range

Input Current : Nominal Average 50 mA r.m.s

CMOS output levels :

Sensitivity of GPS Receiver: -161 dBm sensitivity

3. GPS Performance

Receiver : 32 channel GPS/GLONASS receiver

Acquisition Time : Depends upon the Requirement.

Update Rate : Depends upon the Requirement.

Accuracy : 5 m

- **GIS Maps**

- **Web Server Hosting**

- **Web based Application Software & Database**

- **Web Based Security**

- **Product Manual**

- **Training**

- **Product Upgrades**

- **Product Maintenance & Support**

GSM SIM Cards for GPRS Connectivity



1) Trial of best telecom network in Area (BSNL/TATA/Airtel/Reliance etc)

2) Installation & Commissioning.

3) Pricing and Negotiation of GPRS rentals

*Product
Highlights
&
Snapshots*

Map View

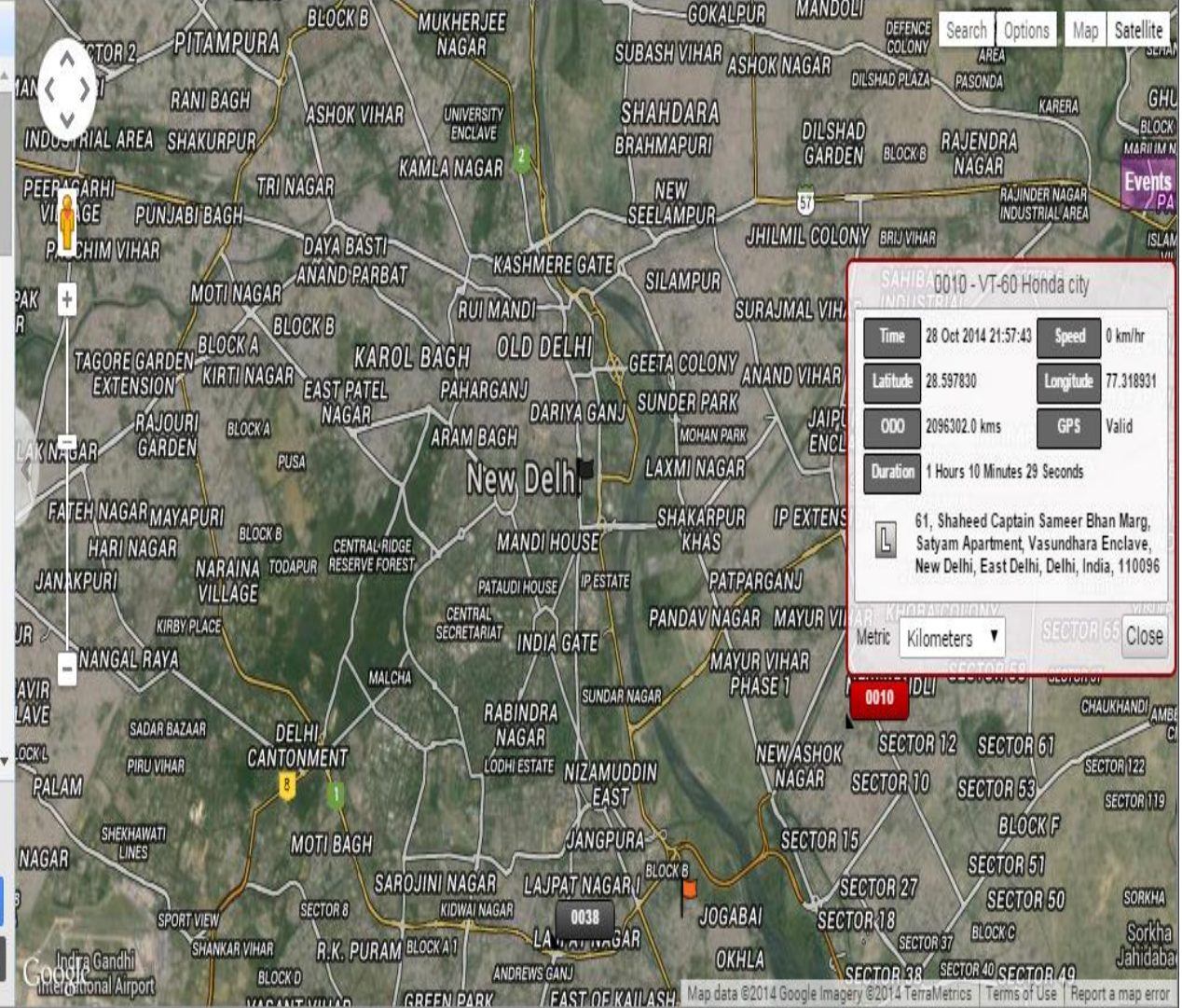
Tracker Name	Information
<input checked="" type="checkbox"/> 0000	Consultant car 4955 ZR 03
<input checked="" type="checkbox"/> 0001	UA 07 T 5478
<input checked="" type="checkbox"/> 0002	DH Neemuch...
<input checked="" type="checkbox"/> 0003	rma-irfan 2
<input checked="" type="checkbox"/> 0004	mp44-bc-06...
<input checked="" type="checkbox"/> 0005	MH01-BP2141
<input checked="" type="checkbox"/> 0006	UP11T-5506
<input checked="" type="checkbox"/> 0007	B 86672 DXB...
<input checked="" type="checkbox"/> 0008	ACV 575 ACV 575
<input checked="" type="checkbox"/> 0009	3-80918
<input checked="" type="checkbox"/> 0010	VT-60 Honda...

Select All

Filter

Regn. Number

More Filters Finish



Geofence Drawing

Circular

Radius 0.00 Kilometers

GPS Coordinates

Latitude (Decimal Notation)

Longitude (Decimal Notation)

Location

Clear

Save

Modify Geofences

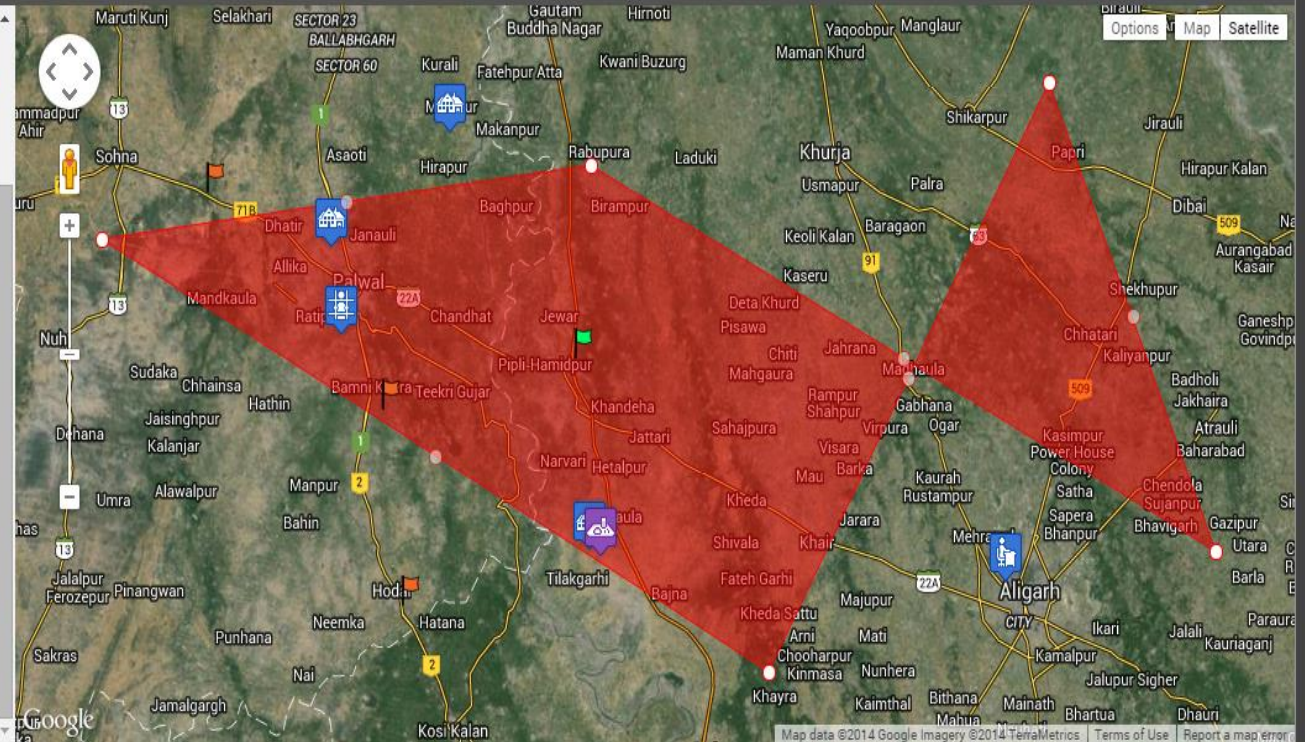
Geofences

Kaushal

Remove

Finish

Right click on any circular mark to remove



Click on map to draw path

Path Name

Radius 1 Kilometers

Checkpoint

Name	Radius	Treat as POI

Clear Save

Modify Path

Paths

Delhi - Gurgaon

Remove Finish

Right click on any circular mark to remove
Double click to add as Checkpoint

Map data © 2014 Google Imagery © 2014 CNES / Astrium

List View

Tracker Name	Date	Status	Duration	Speed	Driver	Place	Fuel	Temperature
Consultant car	29 Oct 2014 17:18:25	Moving	8 Minutes 43 Seconds	6 km/hr	Mamade	B1 Southbound, Ebène, Quatre Bornes, ...		
UA 07 T 5478	12 Feb 2014 14:50:39	No Data	21 Months 7 Days 2 Hours	6 km/hr		Kolonel Sobhachand Marg, Khrak Ram J... [0]		
DH Neemuch(Borival jee)	29 Oct 2014 17:27:18	Moving	10 Minutes 34 Seconds	41 km/hr		Madhya Pradesh State Highway 31A, Sa...		
rma-irfan 2	06 Jun 2014 12:02:36	No Data	12 Months 1 Days 5 Hours	0 km/hr		85, Kaveri Kunj, Kaveri Kunj, Kamla Nag... [0]		
mp44-bc-0672 Jeeran	29 Oct 2014 16:59:46	Stopped	3 Hours 47 Minutes 17 Seconds	0 km/hr		Mandi Road, Gandhi Nagar, Aghoriya, N... [99]		
MH01-BP2141	29 Oct 2014 17:07:46	GPS Invalid	19 Minutes 23 Seconds	4 km/hr		Road Number 29, Air Force Quarters, Si... [0]		
UP11T-5506	29 Oct 2014 17:27:10	Moving	14 Minutes 19 Seconds	30 km/hr		Kharar-Kurali Highway, Aujala, Sahibza... [69]		
B 86672 DXB NISSAN Hi AB Crane Pr...	29 Oct 2014 17:27:19	Idling	8 Minutes 50 Seconds	0 km/hr		Al Sufouh Road, Al Sufouh 2, Al Sufouh... [74]		
ACV 575	29 Oct 2014 17:27:10	Moving	1 Minutes 29 Seconds	30 km/hr	Desmond	Kharar-Kurali Highway, Aujala, Sahibzada Ajit Singh Nagar, Punjab, India, 140301 Lantana Avenue, Luanshya, Luanshya, ...		
3-80918	29 Oct 2014 17:25:25	Moving	24 Minutes 59 Seconds	9 km/hr		Roosevelt Street, Lideta, Addis Ababa, ... [54]		
VT-60 Honda city	29 Oct 2014 08:57:45	Stopped	19 Hours 29 Minutes 56 Seconds	0 km/hr		Shaheed Captain Bhan Marg, Doctors A...		
3-95102	29 Oct 2014 13:42:47	Moving	3 Hours 56 Minutes 43 Seconds	19 km/hr		Unnamed Road, Sheka, Southern Natio... [82]		
Duster	27 Oct 2014 20:26:09	No Data	1 Days 21 Hours 1 Minutes	46 km/hr		Dadri Main Road, Jalpura, Greater Noid...		
Ritz Diesel 0112	29 Oct 2014 00:24:22	GPS Invalid	17 Hours 2 Minutes 47 Seconds	0 km/hr		b-576, Kamla Nagar, Basanth Vihar, Ka...		
UN-1276	29 Oct 2014 16:50:51	Moving	5 Hours 31 Minutes 49 Seconds	11 km/hr	Belete Belay	Dem. Rep. Congo St, Urael, Bole, Addis ... [16]		
IIP-80-4W 9969	29 Oct 2014 17:21:26	Stopped	6 Minutes 14 Seconds	0 km/hr		SN Mour Marble Road, RITCO Industria [98]		

Filter Tracker Name



Finish

Job Scheduler

Task Name	Start Time	End Time	Driver	Tracker Name	Address	Mobile
-----------	------------	----------	--------	--------------	---------	--------

Basic

New

Task Name

Task Description

Address (Select From Contacts)

Mobile

Email

Period

Start :

End :

Tracker & Driver

Company Name	Embarc	Username	demo
Start Date	29 Oct 2014 00:00:00	End Date	29 Oct 2014 23:59:00

Tracker Name:	Consultant car	Field of Application:	Vehicle Tracking
License Plate:	4955 ZR 03	Vehicle Type:	

Time	Event	Place	Latitude	Longitude
Period: 29 Oct 2014 00:00:00 - 29 Oct 2014 23:59:00				
05:59:58	Journey type changed	Bernardin de Saint Pierre Street, Vallée des Prêtres, Port Louis, Port Louis, Port Louis, Mauritius	-20.172037	57.535994
06:00:02	Journey type changed	Bernardin de Saint Pierre Street, Vallée des Prêtres, Port Louis, Port Louis, Port Louis, Mauritius	-20.172037	57.535994
06:00:09	Ignition On	Bernardin de Saint Pierre Street, Vallée des Prêtres, Port Louis, Port Louis, Port Louis, Mauritius	-20.172037	57.535994
06:02:04	Journey Started	Bernardin de Saint Pierre Street, Vallée des Prêtres, Port Louis, Port Louis, Port Louis, Mauritius	-20.162454	57.532147
06:02:20	Overspeeding detected	Bernardin de Saint Pierre Street, La Cure, Port Louis, Port Louis, Port Louis, Mauritius	-20.159624	57.529837
06:03:27	Ignition Off	Bait UI Noor Street, La Cure, Port Louis, Port Louis, Port Louis, Mauritius	-20.154547	57.52887
06:03:30	Journey type changed	Bait UI Noor Street, La Cure, Port Louis, Port Louis, Port Louis, Mauritius	-20.154557	57.52887
06:03:35	Journey type changed	Bait UI Noor Street, La Cure, Port Louis, Port Louis, Port Louis, Mauritius	-20.154558	57.52887
06:03:58	Journey Ended	Bait UI Noor Street, La Cure, Port Louis, Port Louis, Port Louis, Mauritius	-20.154558	57.52887
06:27:54	Journey type changed	Bait UI Noor Street, La Cure, Port Louis, Port Louis, Port Louis, Mauritius	-20.154558	57.52887
06:27:58	Journey type changed	Bait UI Noor Street, La Cure, Port Louis, Port Louis, Port Louis, Mauritius	-20.154558	57.52887
06:28:00	Ignition On	Bait UI Noor Street, La Cure, Port Louis, Port Louis, Port Louis, Mauritius	-20.154558	57.52887
06:28:25	Journey Started	Bait UI Noor Street, La Cure, Port Louis, Port Louis, Port Louis, Mauritius	-20.154504	57.528794
06:29:41	Ignition Off	Bernardin de Saint Pierre Street, La Cure, Port Louis, Port Louis, Port Louis, Mauritius	-20.157083	57.528275
06:29:45	Journey type changed	Bernardin de Saint Pierre Street, La Cure, Port Louis, Port Louis, Port Louis, Mauritius	-20.157085	57.528275
06:29:48	Journey type changed	Bernardin de Saint Pierre Street, La Cure, Port Louis, Port Louis, Port Louis, Mauritius	-20.157091	57.528288
06:30:11	Journey Ended	Bernardin de Saint Pierre Street, La Cure, Port Louis, Port Louis, Port Louis, Mauritius	-20.157091	57.528288
06:30:52	Journey type changed	Bernardin de Saint Pierre Street, La Cure, Port Louis, Port Louis, Port Louis, Mauritius	-20.157091	57.528288
06:30:56	Journey type changed	Bernardin de Saint Pierre Street, La Cure, Port Louis, Port Louis, Port Louis, Mauritius	-20.157091	57.528288
06:31:02	Ignition On	Bernardin de Saint Pierre Street, La Cure, Port Louis, Port Louis, Port Louis, Mauritius	-20.157091	57.528288
06:31:11	Journey Started	Bernardin de Saint Pierre Street, La Cure, Port Louis, Port Louis, Port Louis, Mauritius	-20.157163	57.528352
06:34:14	Ignition Off	Bernardin de Saint Pierre Street, Vallée des Prêtres, Port Louis, Port Louis, Port Louis, Mauritius	-20.172011	57.535987
06:34:17	Journey type changed	Bernardin de Saint Pierre Street, Vallée des Prêtres, Port Louis, Port Louis, Port Louis, Mauritius	-20.172011	57.535987
06:34:30	Journey type changed	Bernardin de Saint Pierre Street, Vallée des Prêtres, Port Louis, Port Louis, Port Louis, Mauritius	-20.172011	57.535987
06:34:45	Journey Ended	Bernardin de Saint Pierre Street, Vallée des Prêtres, Port Louis, Port Louis, Port Louis, Mauritius	-20.172011	57.535987

Consolidated Report

Company Name	Embarc	Username	demo
Start Date	29 Oct 2014 00:00:00	End Date	29 Oct 2014 23:59:00

Tracker Name:	Consultant car	Field of Application:	Vehicle Tracking
License Plate:	4955 ZR 03	Vehicle Type:	

Date	First Ignition	Last Ignition	Stop Duration	Movement Duration	Avg. Speed (km/hr)	Max. Speed (km/hr)	Distance (kms)
29 Oct 2014	08:00:09	17:37:38	22 hr 46 min 02 sec	01 hr 13 min 58 sec	27.37	98.17	33.75
			22 hr 46 min 02 sec	01 hr 13 min 58 sec			33.75

Report Summary

Consultant car	1 Hours 13 Minutes 58 Seconds	98 km/hr	33.75 kms
----------------	-------------------------------	----------	-----------

trackv4.findnsecure.com/php/getpage.php?mode=fleet&fx=genReport&sdate=2014-10-29&shr=0&smin=0&edate=2014-10-29&ehr=23&emin=59&details=0&IDTV=5

Stoover

Company Name	Embarc	Username	demo
Start Date	29 Oct 2014 00:00:00	End Date	29 Oct 2014 23:59:00

Tracker Name:	Consultant car	Field of Application:	Vehicle Tracking
License Plate:	4955 ZR 03	Vehicle Type:	

Period : 29 Oct 2014 00:00:00 - 29 Oct 2014 23:59:00

STOPOVER

Location:	Bait UI Noor Street, La Cure, Port Louis, Port Louis, Port Louis, Mauritius		
From:	29 Oct 2014 06:03:27	To:	29 Oct 2014 06:28:00
Duration:	24 Minutes 33 Seconds	Driver:	Mamade

STOPOVER

Location:	Bernardin de Saint Pierre Street, Vallée des Prêtres, Port Louis, Port Louis, Port Louis, Mauritius		
From:	29 Oct 2014 06:34:14	To:	29 Oct 2014 09:11:42
Duration:	2 Hours 37 Minutes 28 Seconds	Driver:	Mamade

STOPOVER

Location:	Trunk Road, Les Salines, Port Louis, Port Louis, Port Louis, Mauritius		
From:	29 Oct 2014 09:35:19	To:	29 Oct 2014 14:38:56
Duration:	5 Hours 3 Minutes 37 Seconds	Driver:	Mamade

STOPOVER

Location:	Trunk Road, Les Salines, Port Louis, Port Louis, Port Louis, Mauritius		
From:	29 Oct 2014 15:36:53	To:	29 Oct 2014 16:08:01
Duration:	31 Minutes 8 Seconds	Driver:	Mamade

17:37 29-10-2014

Other Features

Job Scheduler

Path Drawing

Path Scheduler

Route Optimizer

ETA

Contacts Database

Reports Publishing

Consolidated Report	<i>Consolidated report containing all the essential parameters of travelling</i>
Geofence Report	<i>Geofencing In/Out report for the trackers</i>
Trips Report	<i>Computes various trips done by the tracker and reports with complete statistics</i>
Events Report	<i>Reports all the events generated by the tracker in the specified period</i>
Overspeed Report	<i>Reports all the speed violations done by the tracker</i>
Fuel Analysis Report	<i>Computes fuel consumption report for a tracker</i>
Temperature Analysis Report	<i>Computes statistics of the temperature recordings</i>
Idling Report	<i>Reports all the places and the durations where vehicle was idling</i>
Stopover Report	<i>Reports all the places and the durations where vehicle was stopped</i>
Current Fleet Report	<i>Generates report with all the positions and status of your current fleet</i>
Job Allocation Report	<i>Shows all the completed and scheduled jobs for the specified period</i>
Summary Report	<i>Shows history of the path taken in textual format</i>

Reports Publishing.....

Journey Report (Vehicle)	<i>Reports all the journeys based on Odometer and business/private mode</i>
Journey Report	<i>Reports of all the journeys based on Driver, Odometer and business/private mode</i>
Path Completion Report	<i>Display completion report for the scheduled path(s)</i>
Accident Report	<i>In case of an impact this reports shows the pre-impact and post-impact analysis</i>
Overspeed Report	<i>Extended Overspeed report with distance, duration and maximum speed reached</i>
Overspeed In Geofence	<i>Overspeeding violations in hardware geofence areas</i>
Trip Report (Single Line)	<i>Detailed trip report with support of private and business distances</i>
Driver Scoring Report	<i>Calculates the score of the drivers based on their driving performance</i>
Engine Hours	<i>Compute Working Engine Hours</i>
Driver Work Report	<i>Computes work done by a driver</i>

MCS GEOTECH (P) LTD

Head Office:

3rd Floor Dhan Nirman Complex,
15, Ashok Marg, Hazratganj
Lucknow – 226001

Branch Office 1:

906, Block – 57, lane - I,
Sec – II, New Shimla,
Shimla - 171009
Himachal Pradesh

Uttar Pradesh

Branch Office 2:

Sector – 56, NOIDA
NCR, Uttar Pradesh

Branch Office 3:

Behind Surendra Vilas,
M.P. Nagar, Bhopal
Madhya Pradesh

Phone: +91-522-2287038, 4017007

Website: www.mcsgeotech.com